



# CONCRETE DISTRIBUTORS

with

**HYDRAULIC BOOMS**

# B

Series

B 212+3

B 312+3

B 15+3

B 17+3

B 18+3

B 21+3





## Ultra Light

ThyssenKrupp



ULTRA LIGHT design hydraulic placing booms are made of High Strength Steel which provides long life, light weight and practical use.

Distribution area / weight – feet clearance rates are unbeatable.

Optimization in the design is to maximize the practicability.

Therefore the users describe the equipment as “job-site friendly equipment”.

TWIN DRIVE enables users to alter the power source.

In case of electric cut-off, concrete placing can continue without interruptions and short term works can be finished practically.

Cost, time and performance gain is achieved at serious levels in construction sites.

### BOOM CONSTRUCTION

Produced from special quality steel with high strength, flexibility and suitability for welding. It is light, strong and long durability...

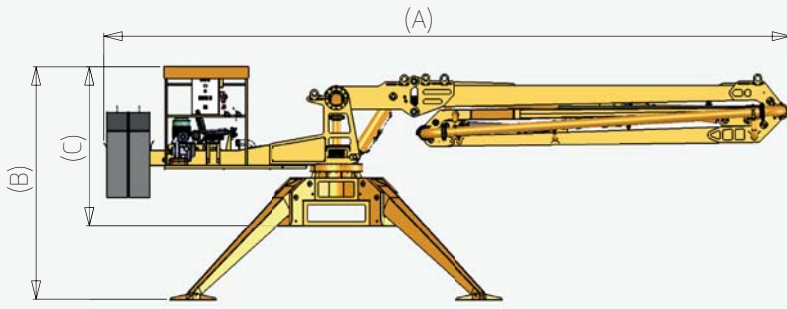
### SPLIT FRAME (Detachable Boom Unit)

Simplified split system makes it possible to detach the boom unit easily.

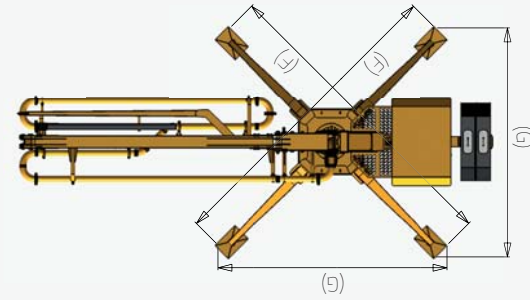
When the crane capacity is limited the detachable boom and chassis can be lifted and moved separately.

# B 212, B 312, B 15, B 17, B 18

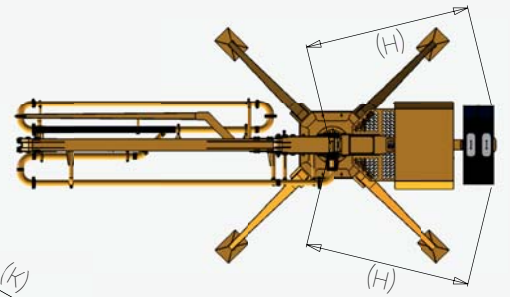
## Overall Dimensions



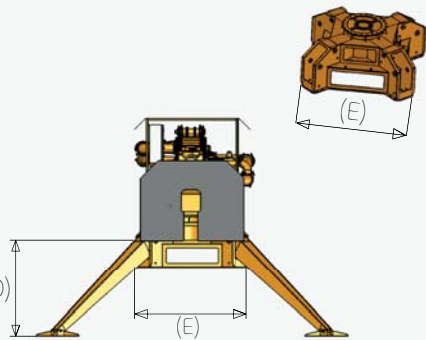
Side Length



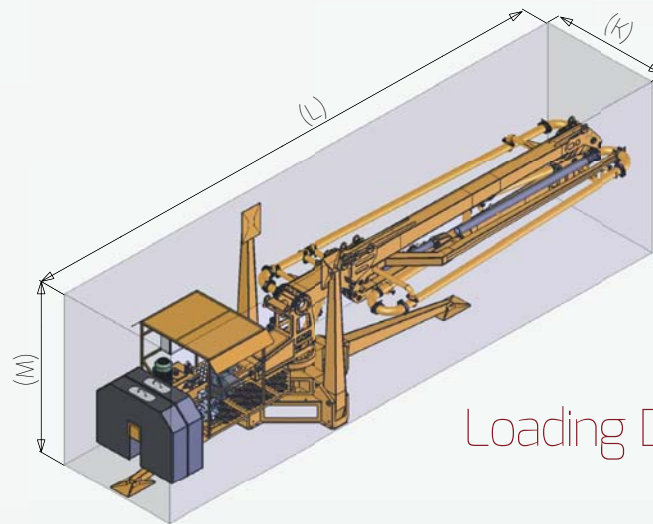
Top Length



Tail Turn



Rear Length



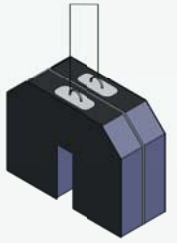
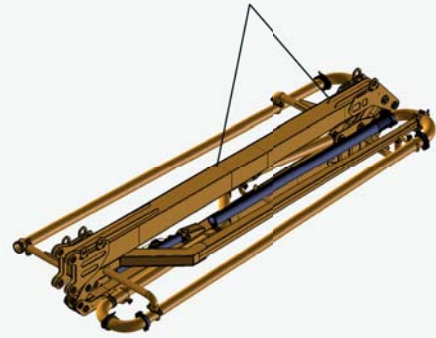
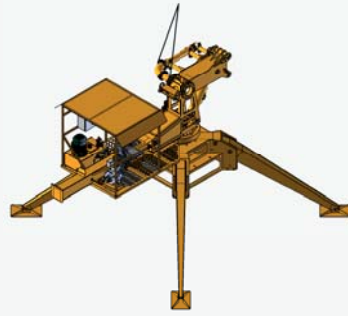
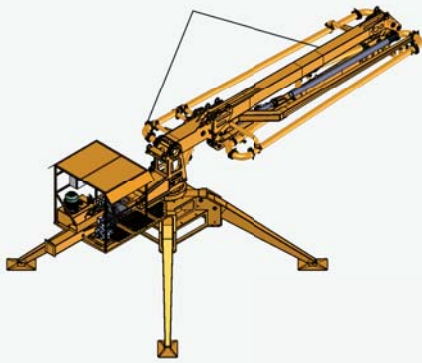
Loading Dimensions

Widely used in high-rise building constructions for casting concrete on wide deck buildings and especially in columns and walls.

|   | <b>B-212</b> | <b>B-312</b> | <b>B-15</b> | <b>B-17</b> | <b>B-18</b> |
|---|--------------|--------------|-------------|-------------|-------------|
| A | 9774         | 8016         | 9365        | 10130       | 10760       |
| B | 2958         | 2958         | 3289        | 3428        | 3428        |
| C | 1878         | 1878         | 2359        | 2346        | 2346        |
| D | 1613         | 1613         | 1750        | 1500        | 1500        |
| E | 1455         | 1455         | 1684        | 1793        | 1793        |
| F | 5187         | 5187         | 6142        | 6590        | 6590        |
| G | 3859         | 3859         | 4616        | 4908        | 4908        |
| H | 3284         | 3273         | 3398        | 3499        | 3598        |
| K | 2000         | 2050         | 2000        | 2050        | 2050        |
| L | 9900         | 8100         | 9450        | 10250       | 10900       |
| M | 2800         | 2800         | 3220        | 3300        | 3300        |

# B 212, B 312, B 15, B 17, B 18

## Weights



Chassis + Split Boom

Chassis

Split Boom

Ballast



Optional  
Carrying Cart



Optional  
Elevation Tower

### Chassis + Split Boom

### Chassis

### Split Boom

### Ballast

|       |         |         |         |             |
|-------|---------|---------|---------|-------------|
| B-212 | 2210 kg | 1310 kg | 900 kg  | 1 X 1260 kg |
| B-312 | 2360 kg | 1330 kg | 1030 kg | 1 X 750 kg  |
| B-15  | 3030 kg | 1800 kg | 1230 kg | 1 X 1000 kg |
| B-17  | 3520 kg | 1980 kg | 1540 kg | 2 X 1300 kg |
| B-18  | 3600 kg | 2060 kg | 1540 kg | 2 X 1300 kg |



# B 212, B 312, B 15, B 17, B 18

## Technical Details



|  | <b>B-212</b>                | <b>B-312</b>                | <b>B-15</b>                   | <b>B-17</b>                   | <b>B-18</b>                   |
|--|-----------------------------|-----------------------------|-------------------------------|-------------------------------|-------------------------------|
| Distribution Diameter                    | 24 m                        | 24 m                        | 30 m                          | 35 m                          | 36 m                          |
| Distribution Area                        | 452 m <sup>2</sup>          | 460 m <sup>2</sup>          | 730 m <sup>2</sup>            | 962 m <sup>2</sup>            | 1020 m <sup>2</sup>           |
| Chassis Weight                           | 1310 kg                     | 1330 kg                     | 1800 kg                       | 1980 kg                       | 2060 kg                       |
| Split boom Weight                        | 900 kg                      | 1030 kg                     | 1230 kg                       | 1540 kg                       | 1540 kg                       |
| Machine Weight<br>(Chassis + Split Boom) | 2210 kg                     | 2360 kg                     | 3030 kg                       | 3520 kg                       | 3600 kg                       |
| Ballast Weight                           | 1260 kg                     | 1500 kg<br>(2 X 750 kg)     | 2000 kg<br>(2 X 1000 kg)      | 2600 kg<br>(2 X 1300 kg)      | 2600 kg<br>(2 X 1300 kg)      |
| 1. Boom Length                           | 6475 mm                     | 4665 mm                     | 5640 mm                       | 6432 mm                       | 7360 mm                       |
| 2. Boom Length                           | 5525 mm                     | 3718 mm                     | 4700 mm                       | 5503 mm                       | 5503 mm                       |
| 3. Boom Length                           | -----                       | 3178 mm                     | 4700 mm                       | 5237 mm                       | 5237 mm                       |
| End Hose Length                          | 3 m                         | 3 m                         | 3 m                           | 3 m                           | 3 m                           |
| Hydraulic Pump Motor                     | 3 kW, 3 Phase<br>380-400 V. | 3 kW, 3 Phase<br>380-400 V. | 5.5 kW, 3 Phase<br>380-400 V. | 7.5 kW, 3 Phase<br>380-400 V. | 7.5 kW, 3 Phase<br>380-400 V. |
| Hydraulic Tank Capacity                  | 60 liter                    | 60 liter                    | 60 liter                      | 80 liter                      | 80 liter                      |
| Maximum System Pressure                  | 200 bar                     | 200 bar                     | 200 bar                       | 200 bar                       | 200 bar                       |
| Folded Transport Length                  | 9900 mm                     | 8100 mm                     | 9450 mm                       | 10250 mm                      | 11180 mm                      |
| Folded Transport Width                   | 2000 mm                     | 2050 mm                     | 2000 mm                       | 2050 mm                       | 2050 mm                       |
| Folded Transport Height                  | 2800 mm                     | 2800 mm                     | 3220 mm                       | 3300 mm                       | 3300 mm                       |



Emergency Hand Pump



Remote Control

Elevation Tower



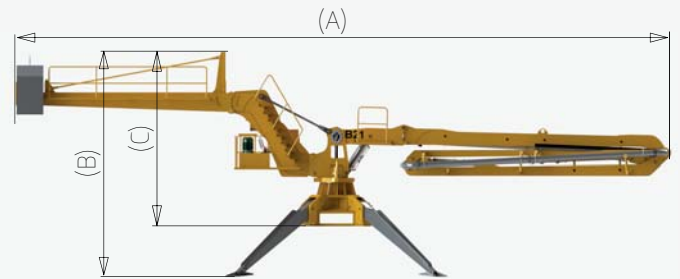
# B 21

## Technical Details

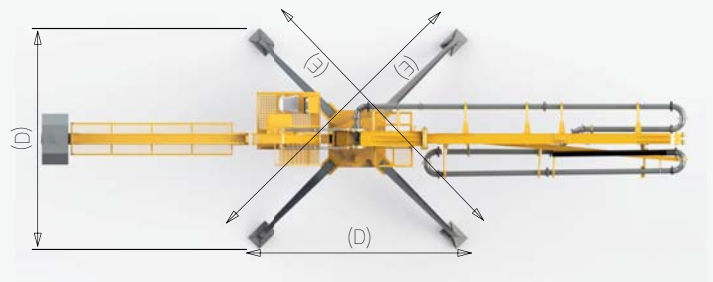


### B-21

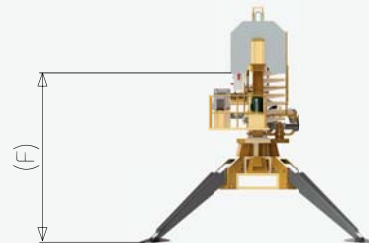
|                                   |                     |
|-----------------------------------|---------------------|
| Distribution Diameter             | 42 m                |
| Distribution Area                 | 1390 m <sup>2</sup> |
| Chassis Weight                    | 3750 kg             |
| Split boom Weight                 | 2050 kg             |
| Machine Weight                    | 5800 kg             |
| (Chassis + Split Boom)            |                     |
| Ballast Weight                    | 1800 kg             |
|                                   |                     |
| 1. Boom Length                    | 7987 mm             |
| 2. Boom Length                    | 6278 mm             |
| 3. Boom Length                    | 6284 mm             |
| End Hose Length                   | 3 m                 |
| Hydraulic Pump Motor              | 7,5 kW, 3 Phase     |
|                                   | 380-400 V.          |
|                                   |                     |
| Hydraulic Tank Capacity           | 80 liter            |
| Maximum System Pressure           | 200 bar             |
| Folded Transport Length with Tail | 16000 mm            |
| Folded Transport Length           |                     |
| Unassembled Tail                  | 10850 mm            |
| Folded Transport Width            | 2200 mm             |
| Folded Transport Height           | 3650 mm             |



Side Length



Top Length



Rear Length



### B-21

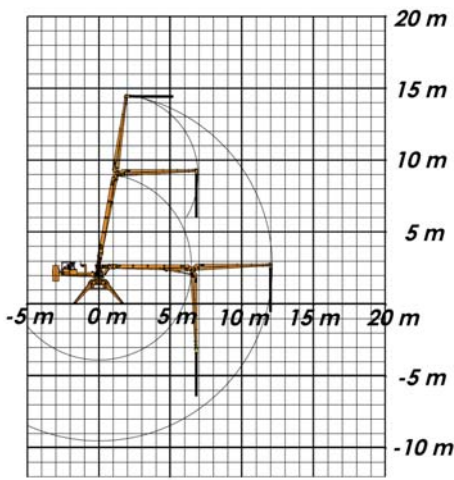
|   |       |
|---|-------|
| A | 15900 |
| B | 5850  |
| C | 4300  |
| D | 5050  |
| E | 6750  |
| F | 4300  |

# B 212, B 312, B 15, B 17, B 18, B 21

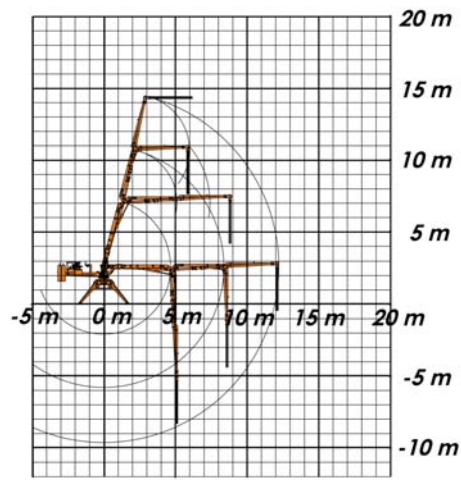
## Concrete Scatter Diagrams



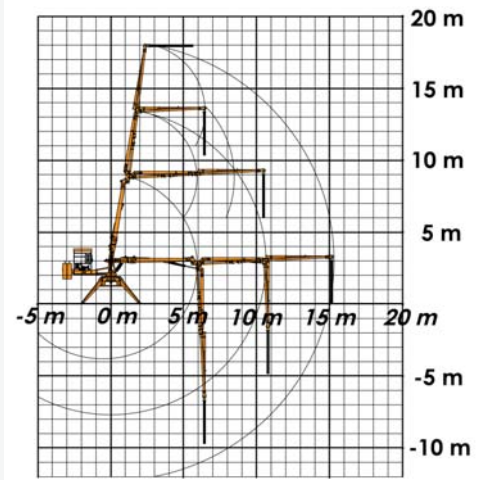
### B 212



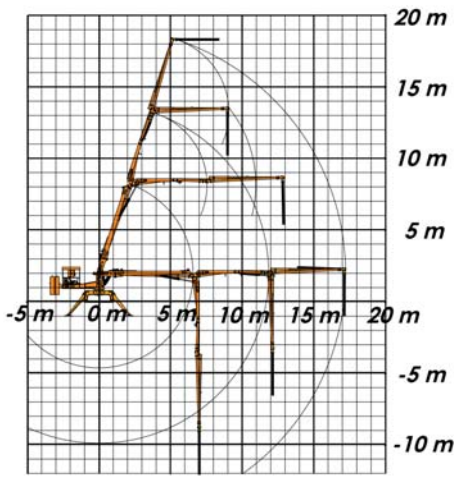
### B 312



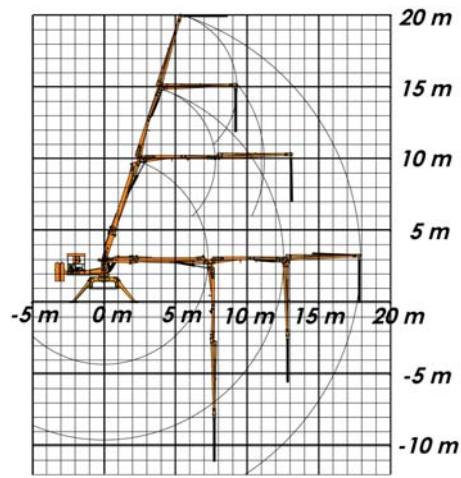
### B 15



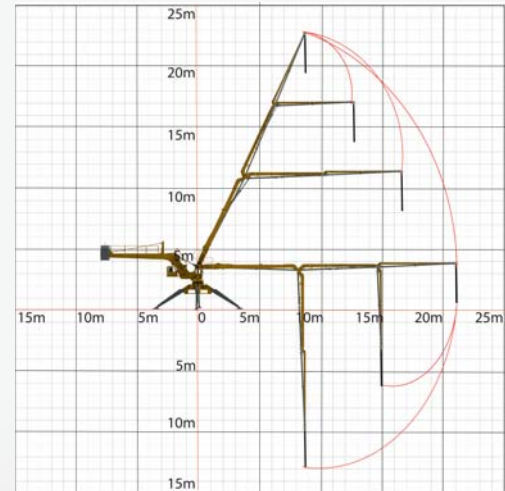
### B 17



### B 18



### B 21





*“Art Of  
Concrete Placing...”*

[www.atabeymakina.com](http://www.atabeymakina.com)

**Address:** Keresteciler San. Sit. 4. Cad. No: 39 Kahramankazan/Ankara - TURKEY

**Tel:** +90 (312) 441 11 33 **Fax:** +90 (312) 441 58 88

